



BOARD HIGHLIGHTS

April 20, 2022



COVID-19 UPDATE



Associate Superintendent Monty presented an update on COVID-19 in BGSD schools. Staff absence rates have continued to fluctuate over time, with absences occurring for a variety of reasons not solely centered on COVID-19 related illness. BGSD will continue to follow public health guidelines and monitor staff absences.

BEAUMONT SCHOOL UTILIZATION REVIEW UPDATE

Associate Superintendent Dargis presented the final recommendations for the City of Beaumont school utilization review. Due to the consistent growth experienced by the City of Beaumont over the last 17 years, reviewing attendance boundaries and school utilization rates on a regular basis (Board Policy 15) ensures effective resource management. The recommendation addresses the utilization concerns and strikes a balance in maintaining the viability of the programs associated with the three impacted Beaumont schools of École J.E. Lapointe School (ÉJELS), École Bellevue School (ÉBS) and École Champs Vallée School (ÉCVS).

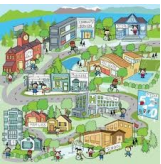


ÉJELS Principal Marla Tonita, ÉCVS Principal Patrick Gamache Hutchison, and ÉBS Principal Jennifer El-Khatib provided insights into how the changes and transitions of students would be managed by their respective schools to best minimize disruptions to students and families.

The Board approved redirecting the École Bellevue School graduating Grade 6 French Immersion students from École Champs Vallée School to École J. E. Lapointe School effective the commencement of the 2022-2023 school year.

The Board approved redirecting students from the subdivision of Royal Oaks, Lukas Estates and Diamond Estates from École Champs Vallée School to École Bellevue School for Kindergarten to Grade 6.

The Board approved the following transition plan: To achieve the recommendation associated with the Royal Oaks, Lukas Estates, and Diamond Estates subdivisions, and to limit disruptions to student learning, the initial transition will be Kindergarten to Grade 4 students from Royal Oaks, Lukas Estates, and Diamond Estates to be redirected to École Bellevue School effective the commencement of the 2022-2023 school year.



The Board approved associating the initial neighbourhood phases of the ELAN development with École Bellevue School for Kindergarten to Grade 6.

OUT OF PROVINCE TRAVEL

Administrative Procedure 260 – Student Excursions explains the process BGSD follows in organizing and approving student excursions. Appendix A – Student Excursions Approving Authorities establishes the designated approving authority for student excursions dependent on the duration and location of the excursion.

In June 2020, the Board of Trustees passed a motion to cancel all international and domestic student excursions that required Board approval due to the COVID-19 pandemic. The Board of Trustees will discuss reopening international and domestic student excursions at the June 2022 Committee of the Whole, with a final decision to be presented at the June 2022 Regular Board meeting.





BOUNDARY CHANGES FOR CORINTHIA/CALEDONIA PARK

Associate Superintendent Dargis explained that the Southfork neighbourhood, located in the South East section of Leduc, will soon grant residents occupancy for Phase 11 of the development. The Southfork neighbourhood is currently within the Caledonia Park School (CPS) K-9 English attendance boundary and the École Corinthia Park School (ECPS) K-6 French Immersion attendance boundary.



CPS is currently operating near a 100% utilization rate, with further residential development expected within the Meadowview and Tribute neighbourhoods. ECPS is presently operating at a 62% utilization rate. Currently, the ECPS attendance boundary includes the neighbourhoods of Corinthia Park and Blackstone for English and French programming as well as the neighbourhood of Woodbend and all the neighbourhoods, including rural residents, east of Highway 2 for French Immersion programming.

CPS will need the capacity to accommodate future development of the neighbourhoods of Meadowview and Tribute, and ECPS can accommodate this boundary change. Bussing to the schools will be available to residents more than 2.4 km away from the designated schools. All residents impacted by this recommendation would qualify for transportation.

The Board approved immediately assigning all future development within the neighbourhood of Southfork, starting with Phase 11, to École Corinthia Park School (K-6) for both English and French Immersion programming.

GROUNDBREAKING—OHPAHO SECONDARY SCHOOL

Superintendent/CEO Romanchuk advised that the Ministry of Infrastructure will schedule a groundbreaking ceremony at the site of the future Ohpaho Secondary School on May 25, 2022. Planning is underway and more details will follow in the coming month.



POLICY DEVELOPMENT

The Policy Committee is currently reviewing the following policies:

- ◆ Policy 2 Appendix B—BGSD Board Self-Evaluation Performance Assessment Guide
- ◆ Policy 12—Role of the Superintendent and Appendix—BGSD Superintendent Performance Assessment Guide
- ◆ Policy 15 Appendix—School Reconfiguration



MLA LUNCH & LEARN

The Board of Trustees hosted MLA Brad Rutherford, MLA Mark Smith and MLA Rick Wilson, Minister of Indigenous Relations for lunch at the April 6, 2022 Committee of the Whole meeting.

The Board considers networking with our MLAs to be an important opportunity for collaboration and extended their thanks to MLAs Rutherford and Smith and Minister Wilson for the chance to connect and strengthen relationships.



LEDUC CHAMBER OF COMMERCE



Trustees provided a report on their experiences at the Leduc Chamber of Commerce Expo and provided comments regarding their experiences.

Trustees appreciated the opportunity to network and engage with parents, students, businesses and community members to build stronger relationships.

CELEBRATING SUCCESS

The April 2022 School News was presented recognizing our schools, students and staff from across the Division.

